

DRAGONWAR®



[HTTP://WWW.DRAGONWAR.JP](http://www.dragonwar.jp)



USER'S MANUAL

GS
Warlord
GAMING MOUSE

CONTENTS

PACKAGE CONTENTS	1
SYSTEM REQUIREMENTS / TECHNICAL SPECIFICATIONS	2
EASY AIM FUNCTION	3
GAMING MOUSE LAYOUT	4
INSTALLING YOUR DRAGONWAR G5	5
CONFIGURING YOUR DRAGONWAR G5	6
ASSIGN MOUSE BUTTON	7
BUTTON ASSIGNMENT MENU	8
SENSITIVITY OPTIONS	9
CREATING MARCOS	10
ASSIGN BUTTON TAB	11
MACROS MANAGER	12
PROFILE	13
POLLING RATE	14

POLLING RATE

The higher the polling rate, the more often the computer receives information about the status of your mouse, thus increasing the mouse pointer's reaction time. You can switch between 125Hz (8ms), 500Hz (2ms) and 1000Hz (1ms) by selecting your desired polling rate on the dropdown menu.




LIGHT EFFECT

The light Effect allows you to configure the LEDs of your Dragonwar Phantom. You can set the lighting to Breathing, Full light. Similar to the previous tabs, the changes made here are also automatically saved to your current profile.

PROFILE

Profile contains the default settings of your device. Any changes made within each tab will automatically be saved into the current profile. If you want to rename this profile, you may do so by typing on the field below PROFILE NAME.

- a. Profile Name:** Enter a profile name of your choice.
- b. Path to executable (*.exe):** Enter a You can even set a profile to work with a specific program or application by using the *LINK PROGRAM* option and clicking  the button to search for it.



PACKAGE CONTENTS / SYSTEM REQUIREMENTS

PACKAGE CONTENTS

- Dragonwar G5 Gaming Mouse
- User Manual
- Set Up CD Rom

SYSTEM REQUIREMENTS

- PC with a free USB 2.0 port
- Windows 10 / 8 / 7 / Vista / XP

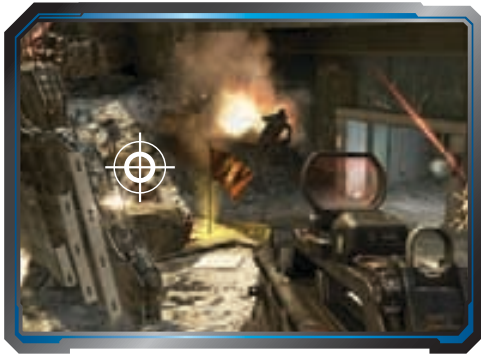
TECHNICAL SUPPORT

- 2 years limited warranty
- Free online technical support at www.dragonwar.jp

TECHNICAL SPECIFICATIONS

- Customizable ergonomics to fit all hand sizes
- 4000dpi Blue-Sensor system
- Gold plated connector
- Braided USB cable

EASY AIM FUNCTION



EASY AIM

Hold down the easy aim button to slow down the cursor movement. (every shot is a deadly shot)

MACRO MANAGER

To create a marco command, simply click the **START RECORD** button. Once you have recorded a macro, you may edit the commands you have entered by selecting each command on the macro screen.

- A. Load the **Marco Manager** and click on the **Marco Select** tab.
- B. Click "**Record**" to start creating a macro.
- C. Type in the desired sequence of keystrokes, then click "**Stop**" to end the recording.
- D. Click "**Apply**" when done.



ASSIGN BUTTON TAB

In the Assign Buttons tab, you can assign various functions to each of the buttons based on your own preferences.

CLICK

Perform a left mouse click

MENU

Open a context-sensitive menu

WHEEL CLICK

Click once on the assigned button to activate scroll wheel. Drag your Dragonwar phantom to scroll in the direction of the mouse movement.

IE FORWARD

Assign a "Forward" command in Windows Explorer / Internet Explorer.

IE BACKWARD

Assign a "Backward" command in Windows Explorer / Internet Explorer.

CPI UP

Assign the DPI speed up

CPI DOWN

Assign the DPI speed down

EASY AIM

Assign anyone button + **EASY AIM** (every shot is a deadly shot)

SCROLL UP

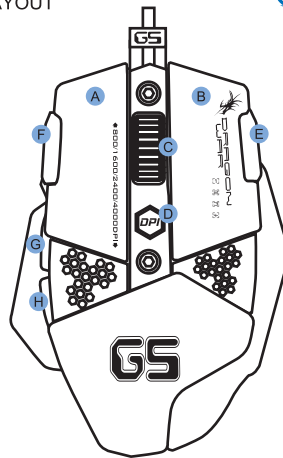
Scroll up the page you currently viewing

CPI DOWN

Scroll down the page you currently viewing



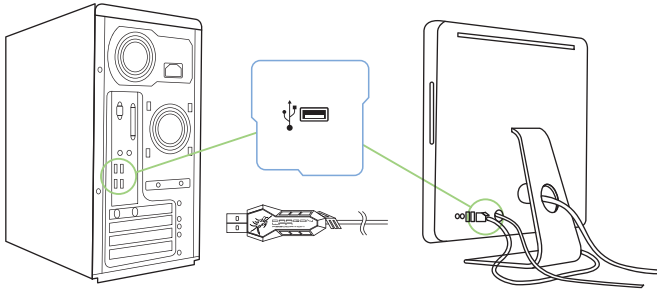
GAMING MOUSE LAYOUT



- A. Left Mouse Button
- B. Right Mouse Button
- C. Scroll Wheel
- D. DPI Change

- E. EASY Aim
- F. Turbo Fire
- G. Forward Button
- H. Back Button

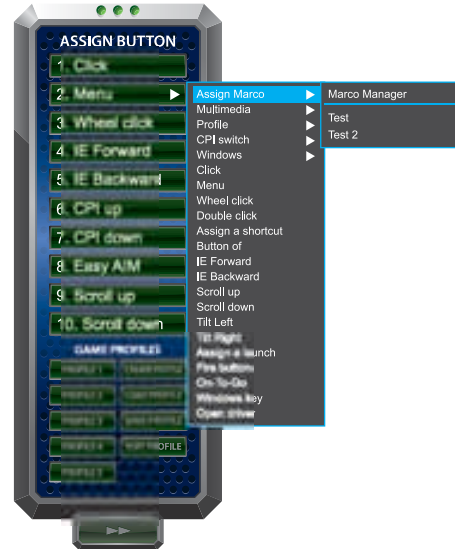
INSTALLING YOUR DRAGONWAR G5



- Step 1: Plug the Dragonwar G5 Mouse into the USB port of your computer.
- Step 2: Run the installer and follow the Programme.
- Step 3: Wait until the software automatically downloads and installs.
- Step 4: Open the programme, then set up

CREATING MARCOS

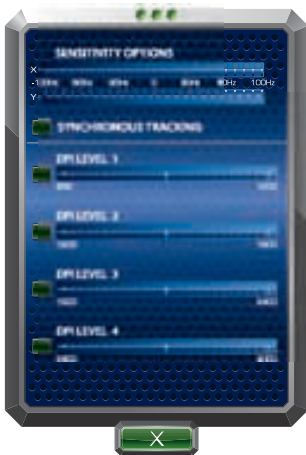
If the button function or key is not listed, or if you would like to assign a marco to a button, select "Marco" from the menu. In addition, all saved marco will be shown on a sub menu for quick selection when you mouse over the "Marco" option.



SENSITIVITY OPTIONS

Sensitivity pertains to how much effort is needed to move the mouse pointer in any direction. The higher the sensitivity, the more responsive the mouse will be.

1. Select the number of sensitivity stage needed.
2. Click on the stage you would like to preset and adjust using the arrow on the slider below.
3. Click "Apply" when done. To switch between different sensitivity stages, simply assign the Sensitivity Stage Up and Sensitivity Stage Down functions to the desired buttons.



Enable X - Y Sensitivity

By default, the X-axis (horizontal) and Y-axis (vertical) use the same sensitivity values. However, you may set different sensitivity values to each of the axes by selecting the *ENABLE X-Y SENSITIVITY* option.

CONFIGURING YOUR DRAGONWAR G5



MOUSE TAB

The Mouse Tab is your default tab when you first install Programme. This tab allows you to customize your device's profiles, button assignments, performance and lighting.

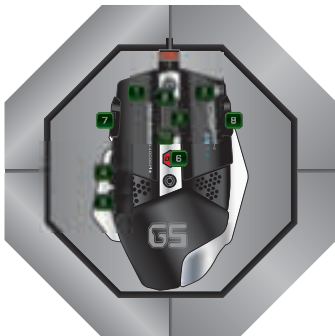


ASSIGN MOUSE BUTTON

Initially, each of the mouse buttons is set to DEFAULT.

which you can choose from the Assign Button submenu:

- | | |
|----------------|--|
| 1 Left Click | - Performs a left mouse click using the assigned button. |
| 2 Scroll Up | - Performs a "Scroll Up" command using the assigned button. |
| 3 Scroll Click | - Activates the universal scrolling function. |
| 4 Scroll Down | - Performs a "Scroll Down" command using the assigned button. |
| 5 Adjust DPI | - Adjusted sensor resolution of 800/1600/2400/4000 DPI |
| 6 IE forward | - Performs a "Backward" command for most internet browsers. |
| 7 IE backward | - Performs a "Forward" command for most internet browsers. |
| 8 Right Click | - Performs a right mouse click using the assigned button. |
| 9 Easy AIM | - Assign anyone button + EASY AIM (every shot is a deadly shot) |
| 10 Fire Button | - Assign anyone button + Fire Button = auto shooting |



BUTTON ASSIGNMENT MENU

Each of the mouse buttons is set to DEFAULT. However, you may change the function of these buttons by clicking the desired button to access the BUTTON ASSIGNMENT Menu.

